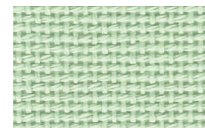


NEEDLEWORK FABRICS

HANDARBEITSSTOFFE · TOILES À BRODER

3256 BELLANA

80 threads · Fäden · fils
= 10 cm · 20 ct.
52 % cotton · Baumwolle · coton
48 % viscose · Modal



633



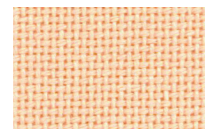
17 (silver)



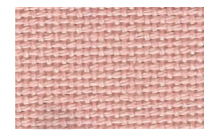
99

3835 LUGANA

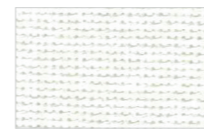
100 threads · Fäden · fils
= 10 cm · 25 ct.
52 % cotton · Baumwolle · coton
48 % viscose · Modal



4094



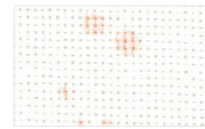
403



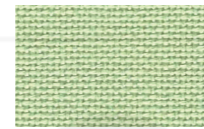
101

3984 MURANO

126 threads · Fäden · fils
= 10 cm · 32 ct.
52 % cotton · Baumwolle · coton
48 % viscose · Modal



1319 (splash)



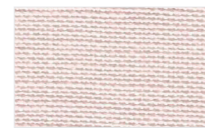
6083



770

3348 NEWCASTLE

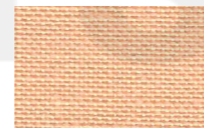
160 threads · Fäden · fils
= 10 cm · 40 ct.
100 % linen · Leinen · lin



4115



770



4094

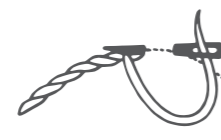
SATIN STITCH

Plattstich · passé plat



STEK STITCH

Stielstich · point de tige



FRENCH KNOT

Knötchenstich · point de noeud



Anchor	Paintbox Crafts	Anchor	Paintbox Crafts	Anchor	Paintbox Crafts	Anchor	Paintbox Crafts
6	212	1	124	379	274	301*	165
894	228	206	250	936	266		
1023	210	210	249	403	1		

1 Back stitch · Rückstich · Point arrière | 2 Stek stitch · Stielstich · Point de tige | 3 French knot · Knötchenstich · Point de noeud
4 Straight stitch · Spannstich · Point lancé | 5 Satin stitch · Plattstich · Passé plat

*metallic