



Flowers with Love



AnchorCrafts.com

   @anchorcrafting

Designed by anaclara.bordou


Design No.: ANC0003-121

MEZ Needlecraft GmbH, 2021. All Rights Reserved.




ANC0003-121 Flowers with Love

Anchor Stranded Cotton 8m No. 4635000- # (Colour n°)

 1 x #00355; #00390; #00894; #01035

 N° 6-7

 15cm

Embroidery 

Beginner 



Flowers with Love

MATERIAL

- Beige cotton fabric;
- 15cm embroidery hoop with screw;
- Scissors;
- Fabric pen (preferably one that vanishes with heat or water - I have used the Pilot Frixion Pen);

STITCHES USED

- Chain Stitch
- Stem Stitch
- Fishbone Stitch
- Satin Stitch
- French knot
- Lazy Daisy Stitch
- Straight Stitch
- Split Stitch
- Woven Wheel Stitch

INSTRUCTIONS

Kick-Start:

1. Print the pattern;
2. Tape your pattern to a light board or to a window and secure the fabric over it so you can see the pattern lines through the fabric;
3. Tracing pattern lines onto fabric with your fabric pen (an ordinary pencil will work too, although just be sure you cover lead pencil lines completely with your embroidery);
4. Place the fabric in the embroidery hoop.

//At this stage your embroidery will look like IMG_01.



TO EMBROIDER THE SHAPE 01:

1. With 3 strands of #00355, use the CHAIN STITCH to fill the shape 01.

TO EMBROIDER THE SHAPE 02:

1. With 3 strands of #01035, use the STEM STITCH to fill the shape 02.

THE BRANCH WITH 7 LEAVES:

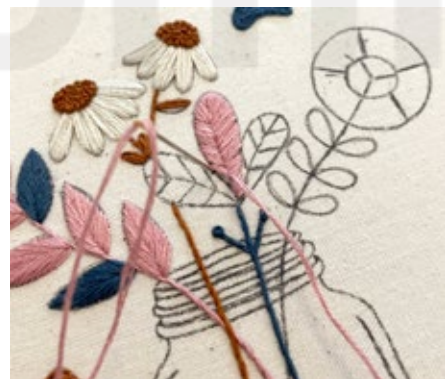
1. *Stem:* Using 3 strands of #00894 and STEM STITCH embroider the stem;
2. *Leaves:* With 3 strands of #00894 use the FISHBONE STITCH to embroider five of the seven leaves and with 3 strands of #01035 embroider the two remaining leaves.

TO EMBROIDER THE DAISIES:

1. *Stems:* With 3 strands of #00355 use the STEM STITCH to embroider the stems and LAZY DAISY STITCH to embroider the leaves;
2. *Petals:* With 3 strands of #00390 use the SATIN STITCH to embroider the daisies petals;
3. *Core:* With 3 strands of #00355 embroider the center of the flowers with FRENCH KNOTS.

THE BRANCH WITH 3 LEAVES:

1. *Stems:* With 3 strands of #01035 use the STEM STITCH to embroider the stems and FRENCH KNOT STITCH to stitch the two dots;
2. *Leaves:* With 3 strands of #00894 use the SATIN STITCH to embroider the three leaves;
// See IMG_02 as a reference.



3. *Leaf Lines:* With 3 strands of #01035 use the SPLIT STITCH to embroider the central line of the leaves and the STRAIGHT STITCH for the diagonal lines.

// See IMG_03 and IMG_04 as a reference.



THE BIG FLOWER:

1. *Stem:* With 3 strands of #00890 use the STEM STITCH to embroider the stems and the little leaves;

2. *Flower:* With the WOVEN WHEEL STITCH use 3 strands of #00894 to embroider the core of the flower and then complete the flower with the same stitch using 3 strands of #00355.

// See IMG_05 and IMG_06 as a reference.



THE VASE:

1. Using 2 strands of #01035 and the SPLIT STITCH to contouring the vase.

FINISHING:

To finish the back of your embroidery hoop, use any stranded cotton and a Running Stitch to gather the fabric behind your hoop. You can then either sew a felt circle onto it or glue the edges of the fabric to the hoop for a more polished look.

//Your hoop is now complete and will look like IMG_07.



WASHING INSTRUCTIONS

All our threads are produced in accordance with Oeko-Tex standards. PH values are tested and all our colour dye lots adhere to Global fastness standards. However, it is important to follow our thread washing instructions. Particularly with dark colors, excess dye can remain on the thread. To minimise any potential bleeding of excess dyestuff it is important to wash the products in THE HOTTEST TEMPERATURE possible, in accordance with the specifications of the fabrics, and use a large amount of water. Please make sure that you also follow the fabric washing instructions where appropriate. As a precaution, you can also use decolorating sheets that you can find in any supermarket.



